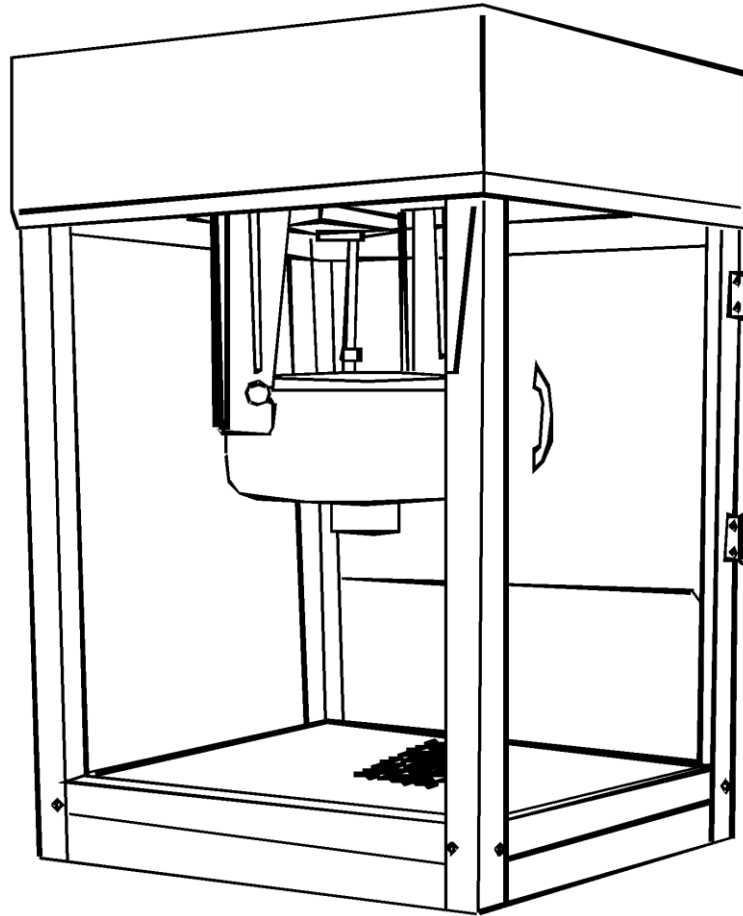


Tabletop Popcorn Maker Machine



After popping cycle is complete, the popping pot will be very hot. Use extreme care when handling.

Remember to turn the pop, or heat switch to the OFF position after the finish of the pop cycle. Unplug unit BEFORE removing heat pot from hanger. Use caution not to bump heat lamp bulb during pot removal.

CAUTION: HOT KETTLE!! Handle with oven mitts. Keep children at a safe distance from popper during procedure.

IMPORTANT SAFEGUARDS

When using electrical appliances, basic safety precautions should always be followed including the following:

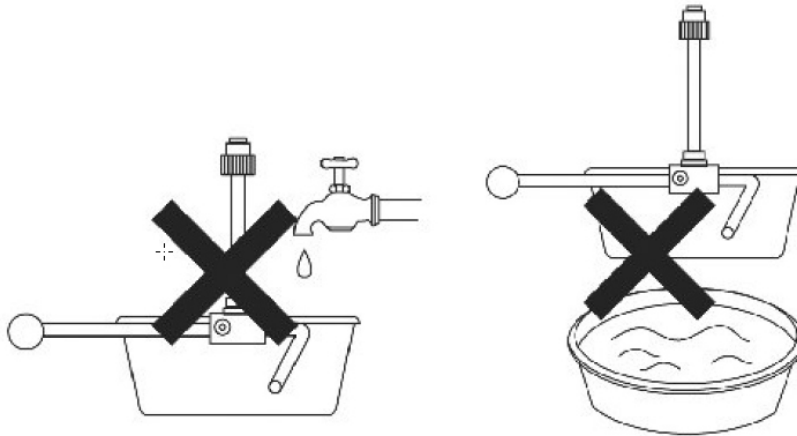
- **READ ALL INSTRUCTIONS BEFORE USING YOUR POPCORN MACHINE.**
- Do not touch hot surfaces. *Always* use handles or knobs to operate.
- To avoid any risk of electrical shock, do not immerse cord or plug in water.
- Close supervision is necessary when being used near children.
- Unplug main power cord from outlet while not in use and before cleaning.
- Allow hot parts to cool down before moving or cleaning.
- Do not operate the appliance with a damaged cord or plug, or if the machine is malfunctioning or damaged. Send the unit to the nearest authorized service center for examination and repair. (ONLY technicians should open up the unit.)
- Injury may occur if using any accessories or attachments not provided or recommended by manufacturer.
- Do not pop kernels in a dry pot (without oil).
- Do not immerse the popping pot in water.
- Pot surfaces are **HOT** and should **NOT** be touched during the popping process or just after use.
- Unplug, clean and cover the unit and store in a dry, safe place while not in use.
- Do not leave the power cord hanging over edge of a table or counter or touching hot surfaces.
- **DO NOT** place the unit on or near a hot gas or electric burner or in a heated oven.
- Extreme caution must be used when moving any appliance containing hot oil or other hot liquids.
- Turn **ALL** switches to "OFF" position before disconnecting power plug from the outlet.
- **DO NOT USE OUTDOORS.**
- Do not use appliance for anything other than the indicated usage.
- To avoid overheating, always have oil and kernels ready before operating.
- Extreme caution must be used when unloading popcorn, **ALWAYS USE OVEN MITTS**. Be careful that residual hot oil or water does not come into contact with skin, as burns may occur.
- Always place the unit over a counter-top so that residual hot oil or water will not cause injury.
- A popper that is plugged into an outlet should not be left unattended.
- This popper will not shut off automatically. To avoid overheating, add corn and oil before operating.
- Extreme caution must be used when unloading popcorn. Always turn the unit over a counter-top so that residual hot water or oil running out will not cause burns.
- Always place popper on a secure, level, stable surface.
- Always keep debris and potentially flammable materials well away from the popper when in operation.

IMPORTANT SAFEGUARDS

- **KEEP OUT OF REACH OF CHILDREN.**
- **DO NOT CLEAN USING ANY ABRASIVE MATERIAL.**
- **NEVER FORCE ANY PARTS OR BRACKETS INTO POSITION.**
- **NO PARTS ARE INTENDED FOR THE DISHWASHER.**

CAUTION: DO NOT IMMERGE THE POPPING POT IN WATER!

SAVE THESE INSTRUCTIONS



ELECTRICAL CORD

- a) A short power-supply cord is to be provided to reduce the risk resulting from becoming entangled in or tripping over a longer cord.
- b) Longer extension cords are available and may be used if care is exercised in their use.
- c) If a longer extension cord is used:
 1. The marked electrical rating of the cord or extension cord should be at least as great as the electrical rating of the appliance;
 2. The extension cord should be a grounding 3-wire cord; and
 3. The longer cord should be arranged so that it does not drape over the counter-top or table top where it can be pulled on by children or tripped over unintentionally.

OPERATING PROCEDURES

1. Place the corn popper on a dry, level surface. Protect from rain and other weather elements. Do not install near pool or water. Plug the unit into a suitable grounded electrical outlet. **(Please check the electrical specifications! This is a commercial quality popper requiring 120V . Be sure that your power source matches the rating label specified next to the power cord.)**
2. The Main unit has 3 function switches: Stirrer, Pop (which controls the Pot Heater) and Light.



Stir (I)



Pop (II)



Light (III)

3. Check to see that the kettle power cord is securely attached and that the stirrer arm is securely seated in its housing inside at the top of the cabinet .
4. Turn the **Light** switch (III) to **ON**. Turn the **Pop** switch (II) to **ON** and add a suitable amount of butter or oil (Fig. 1). While the amount is dependent upon your taste, please do not exceed 1/2 - 3/4 oz. for a full 16oz. batch of popcorn.

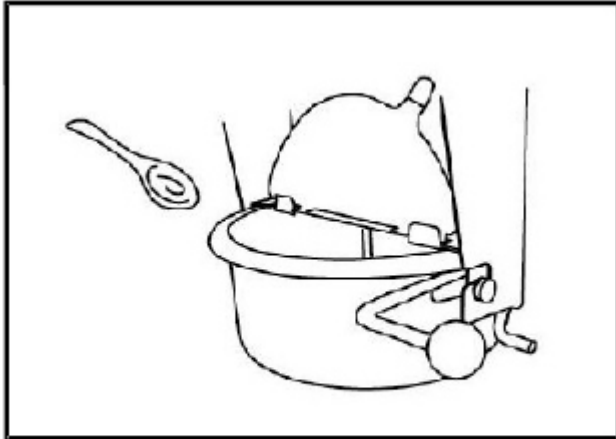


Fig. 1

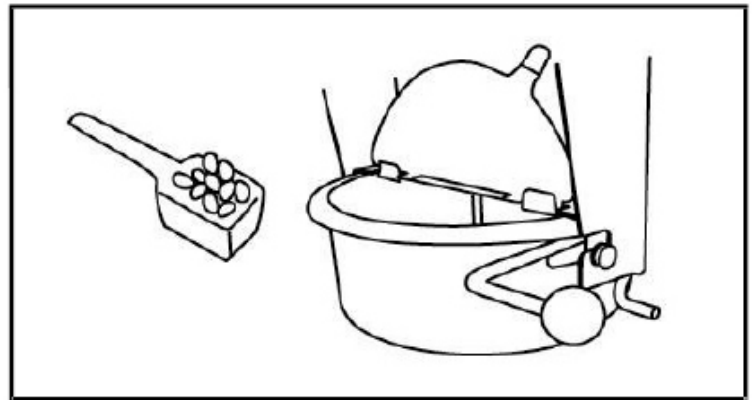


Fig.2

5. Preheat kettle for 3 to 4 minutes with oil added (until steam comes out from the pot).

Please Note: DO NOT USE LIQUID SUGAR OR HONEY AS THIS MAY DAMAGE KETTLE AND CAUSE SMOKING AND/OR INJURY FROM HOT SUGAR. KEEP WATER FROM KETTLE, OIL AND MACHINE. AVOID SPILLING OIL ON OR AROUND THE MACHINE AS THIS MAY CAUSE A POTENTIAL FIRE.

OPERATING PROCEDURES-Continued

- Next pour popcorn and seasoning into pre-heated oil. (Fig, 2) If using bulk kernels, measure the amount of corn by using the measuring scoop provided. Use one scoop per batch. Open the lid and add the popcorn. **Caution: Lid is hot; we recommend wearing oven mitts or potholders. Close lid.**
- Switch the **Stirrer** to **ON** (I). (Fig. 3)
- Close the doors on the main unit carefully.
- Popcorn starts popping out through the lid after about 2 to 3 minutes. (Fig. 4)
- When popping stops (no more popping sound from pot), switch the Stirrer and Pot heater to OFF (I & II) Popping is completed. Rotate the roller bar/kettle arm of the pot and pour out all remaining popcorn. Gently shake if necessary. **Caution: Lid is hot; we recommend wearing oven mitts or potholders.**
- Pop switch (II) must remain **OFF** if the unit is not popping. Only the spot light warmer (III) should be left **ON**; this will keep the popcorn warm, dry and tasty for a longer period of time.
- Popcorn is now ready to serve. **Note:** Do not add butter or other liquid flavoring in main unit popcorn bin. Avoid a big mess! Remove popcorn to suitable serving bowl or popcorn before adding this type of flavoring.
- Always remove plug from power supply before cleaning and if the unit is not being used for a period time.
- Repeat steps 6-10 to continue popping.

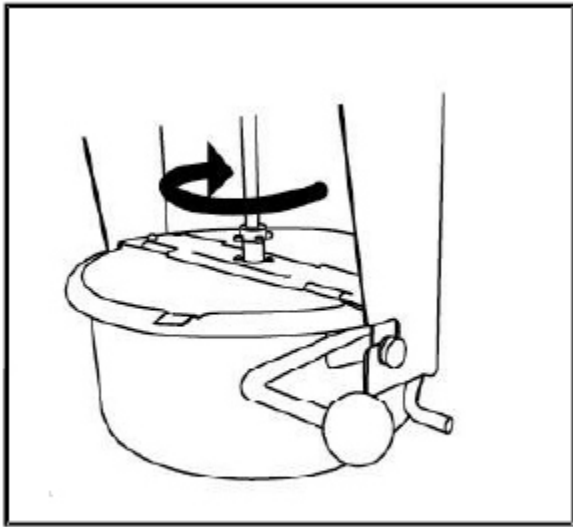


Fig. 3

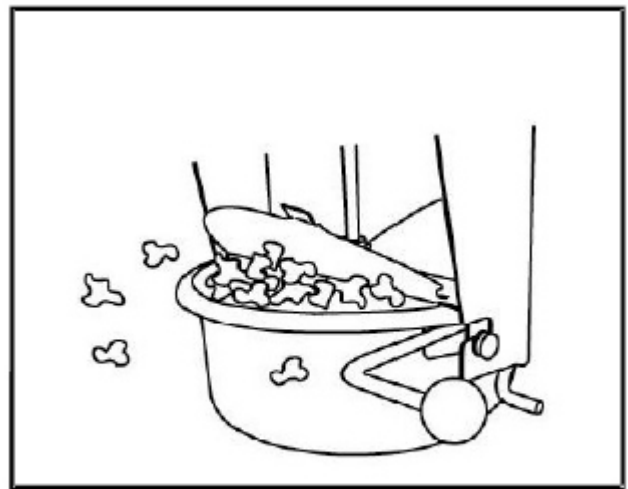


Fig. 4